

**⚠ WARNING**

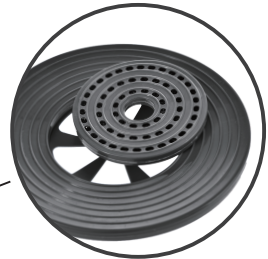
The appliance is only to be used with the power supply unit provided with the appliance. The model of power supply must be FD35VA-12-300 produced by Zhongshan Fuduo Trasformer. It must only be supplied at SELV.

**PawsMark**

# Fresh Water Automatic Fountain

Innovation • Style • Health

## Instruction Manual



### Replaceable Filter

Recommended replacement cycle : 2 to 4 months

AC Input: 220-240V 50/60Hz

Water Capacity: 1.8L

Pump Voltage: Inlet 12V

Rated Power Consumption: 2.8W

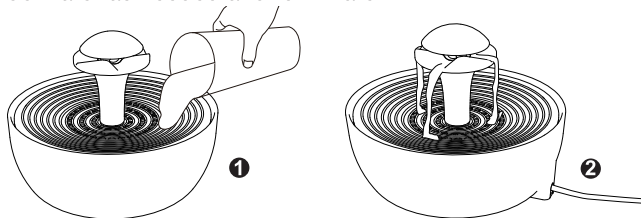
Material: ABS+PP

## PRODUCT INSTRUCTIONS

- The replaceable charcoal filter removes bad tastes and odors
- Oxygen makes the water taste fresh
- An easy and convenient way to provide fresh water for your pet
- Easy to maintain
- Completely disassembles for cleaning

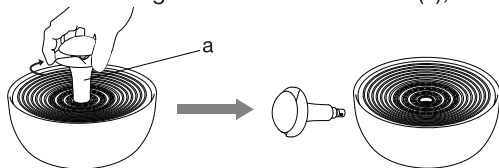
# OPERATING INSTRUCTION

1. Place fountain in desired location. Fill the unit with water ❶. Water level should be above 10mm.
2. Plug in the fountain, allow 1 to 2 seconds for pump to start pumping once plugged in ❷.
3. Add water as needed and refill water.

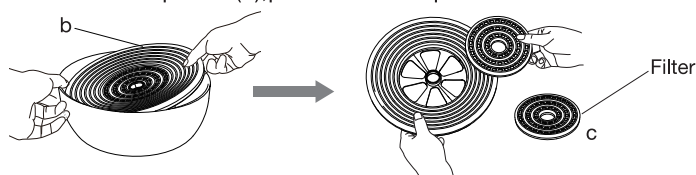


# CLEANING & MAINTENANCE

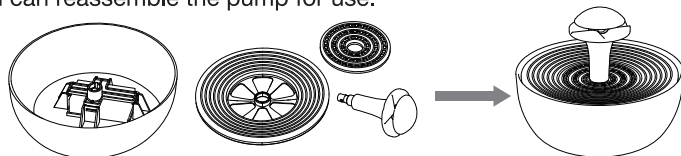
1. Unplug the fountain.
2. Clockwise rotating the water outlet device(a), and then lift it up and take it out.



3. Remove the top bowl(b), pull out and dispose the filter.



4. Pour out remaining water from the lower fountain bowl, wash lower bowl, top bowl, and outlet insert with warm water and mild soap solution. Once the parts are clean you can reassemble the pump for use.




## ⚠ WARNING

### THIS ITEM IS NOT SUITABLE FOR CHILDREN

This product is intended for pets only. Always supervise your pet when using this item. Inspect and clean product on a regular basis. Discard if there is any damage - cracks, chips or if any part becomes detached. Replace with fresh water frequently. Disconnect power supply when cleaning.

Made In China

This appliance can be used by children aged from 8 years and above and persons with reduced physical, sensory or mental capabilities or lack of experience and knowledge if they have been given supervision or instruction concerning use of the appliance in a safe way and understand the hazards involved. Children shall not play with the appliance. Cleaning and user maintenance shall not be made by children without supervision.

 Do not throw electrical equipment away with domestic waste. In observance of European Directive 2012/19/EC on electrical and electronic equipment waste and its implementation in accordance with national regulations, electrical equipment that has reached the end of its product life must be collected separately and recycled in an ecologically compatible way. If electrical equipment is disposed of in dumps or in landfills, hazardous substances can leak into the groundwater and contaminate the food chain, damaging your health and well-being. For further information on the disposal of this product, contact your dealer or a domestic waste collection service.

